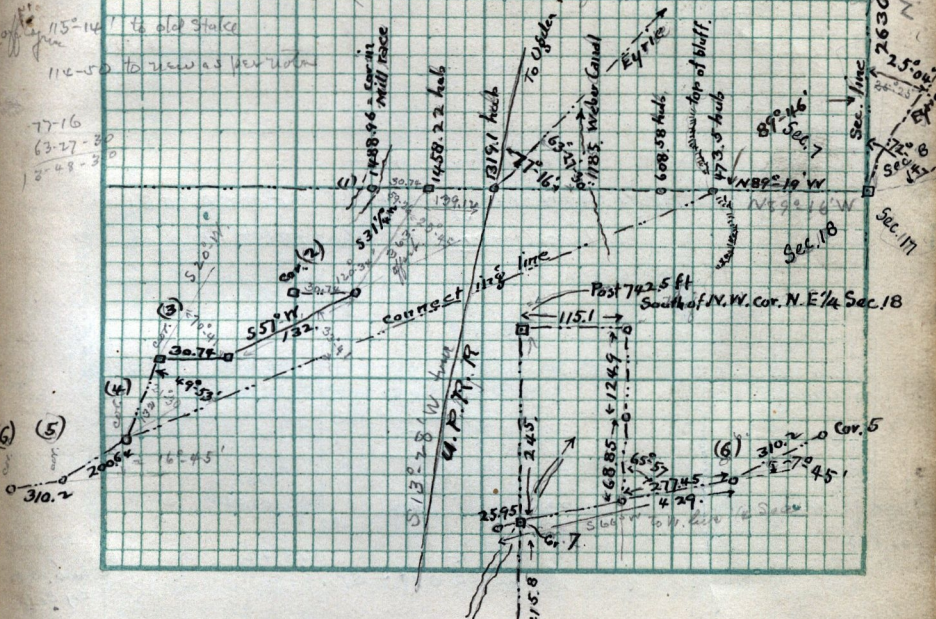


1458.22 = hub in wagon track, 1488.96 = Dyer's best line
 they in Mill race at 1458.22, 50.74 ft E. of cor. Dyer
 (51.215 W (36.3 ft.) Eastwarding an angle to left of foresight
 59° 52' 6" (at 100 ft from here the track is 40 ft R. to right
 at 125 feet is 75 ft right at 200, race is 35 ft right 36.3.
 not corner, thence a line 557.2 W 132. ft to corner in line

115-141 to old stake
 114-50 to new as per record
 77-16
 (3-27-80
 18-48-30



Scale:.....
 this chain's per inch = 2595 ft
 W. of S. line Sec. 18
 by calculated traverse

Oct 19-1891.
 cor. 2 & 3 is 80 ft N. of old willow fence & in brush near N. end of lucerne
 field which lies to the east. Cor. 2 & 4 is in alfalfa patch 25 ft E. of fence
 cor 5 is 35 ft S 85° E. from an old brick shed the head met by Dyer to the cor., and in alfalfa.
 cor 6 is in alfalfa patch 120 ft S.E. of old cor. designated by Dyer
 cor 7 is on W. line to Sec in Mill race 19. ft N. of S.W. cor of Taylor Mill property & 245.5 ft